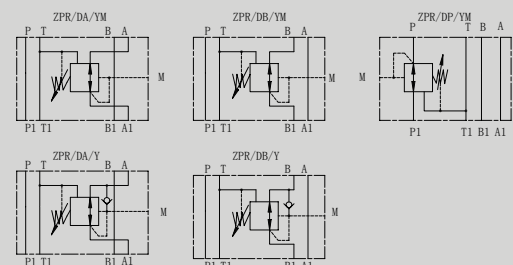


### ZPR-D 型叠加式直动减压阀

#### ZPR-D SERIES DIRECT MODULAR REDUCING VALVES

##### 符号 SYMBOL



ZPR-D型减压阀是叠加式直动三通减压阀，具有二次压力保护装置，主要用来降低系统某一回路的压力。

ZPR-D series are 3-way direct operated pressure reducing valves, which are used to reduce the pressure in a certain circuit lower than of the main circuit.

##### 技术参数 Technical data

通径 Size	6	10
工作压力(Mpa) Operating pressure(Mpa)	31.5	31.5
次工作压力(Mpa) Second working pressure(Mpa)	21	21
背压(MPa) Back pressure(MPa)	6	6
流量(L/min) Flow rate(L/min)	30	60
介质温度(°C) Fluid temperature(°C)	-20 ~ 80	-20 ~ 80
重量(千克) Weight(KGS)	1.3	2.8
阀体 (材料) 表面处理 Valve body (Material) Surface treatment	铸件 表面磷化处理 casting phosphating surface	
油液清洁度/Oil cleanliness	NAS1638 9级和ISO4406 20/18/15级 NAS1638 class 9 and ISO4406 class 20/18/15	

CADIRIRI

www.cadiriri.com.br

formularios@cadiriri.com.br

(11) 2601-2839

(11) 96393-2796

##### ZPR6D外形尺寸和安装 ZPR6D External Dimensions and Fittings

