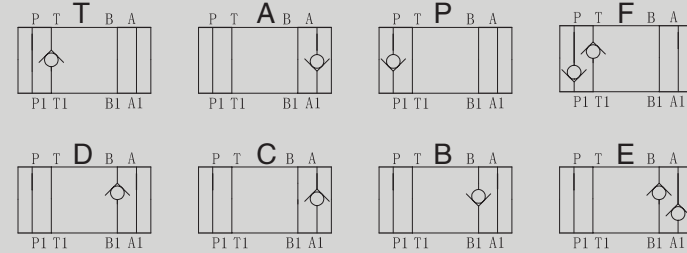


Z1DS型叠加式单向阀

Z1DS SERIES MODULAR CHECK VALVES

符号 SYMBOL

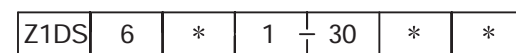


Z1DS型单向阀是叠加式结构的单向阀。

Z1DS series are direct operated check valves.

技术参数 Technical data

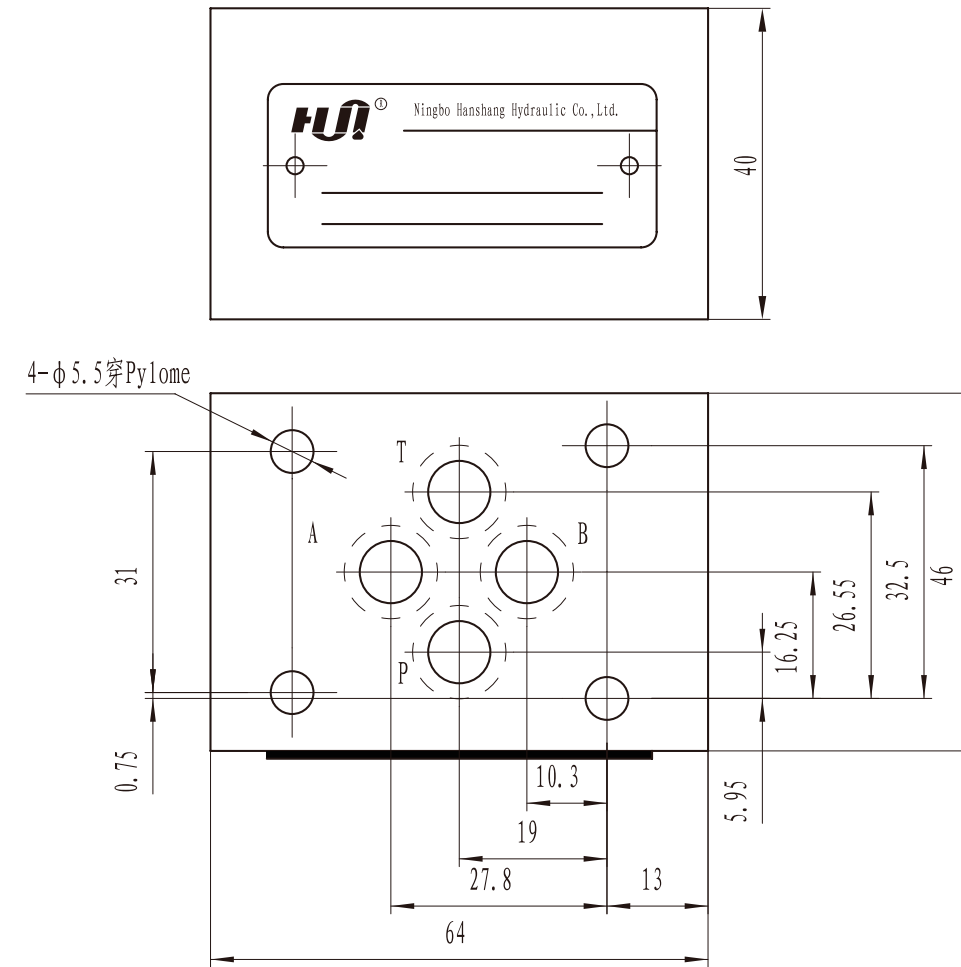
通径 Size	6	10
工作压力(Mpa) Operating pressure(Mpa)	31.5	31.5
流量(L/min) Flow rate(L/min)	40	100
油温温度(°C) Oil temperature range (°C)	-20 ~ 70	-20 ~ 70
重量(千克) Weight(KGS)	0.9	2.3
阀体 (材料) 表面处理 Valve body (Material) Surface treatment	铸件 表面磷化处理 casting phosphating surface	
油液清洁度/Oil cleanliness	NAS1638 9级和ISO4406 20/18/15级 NAS1638 class 9 and ISO4406 class 20/18/15	



型号 Model
 通径:6;10 Size:6;10
 油口液流形式见符号图
 See the symbol for flow type
 开启压力 Cracking pressure
 1= 0.05MPa
 2= 0.3MPa
 3= 0.5MPa

附加说明
 For further details
 无 = 丁腈橡胶 V = 氟橡胶
 No code=NBR seals
 V=FPM seals
 系列号
 Series number

Z1DS6外形尺寸和安装 Z1DS6 External Dimensions and Fittings



Z1DS10外形尺寸和安装 Z1DS10 External Dimensions and Fittings

