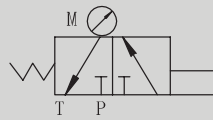


### AM1E型压力表隔离阀

### AM1E SERIES PRESSURE GAUGE SHUTTER



#### 符号 SYMBOL



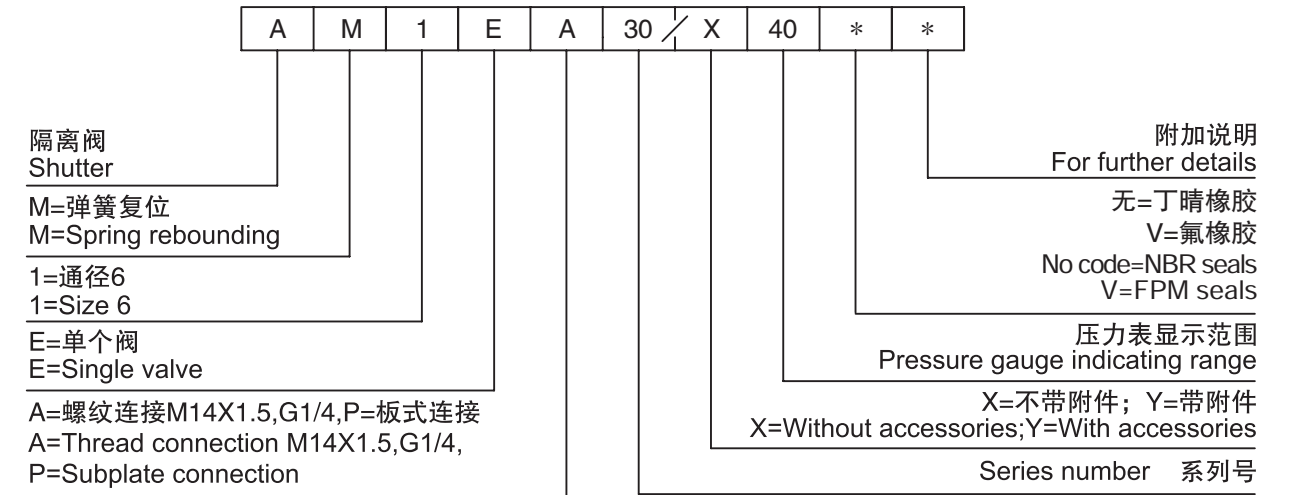
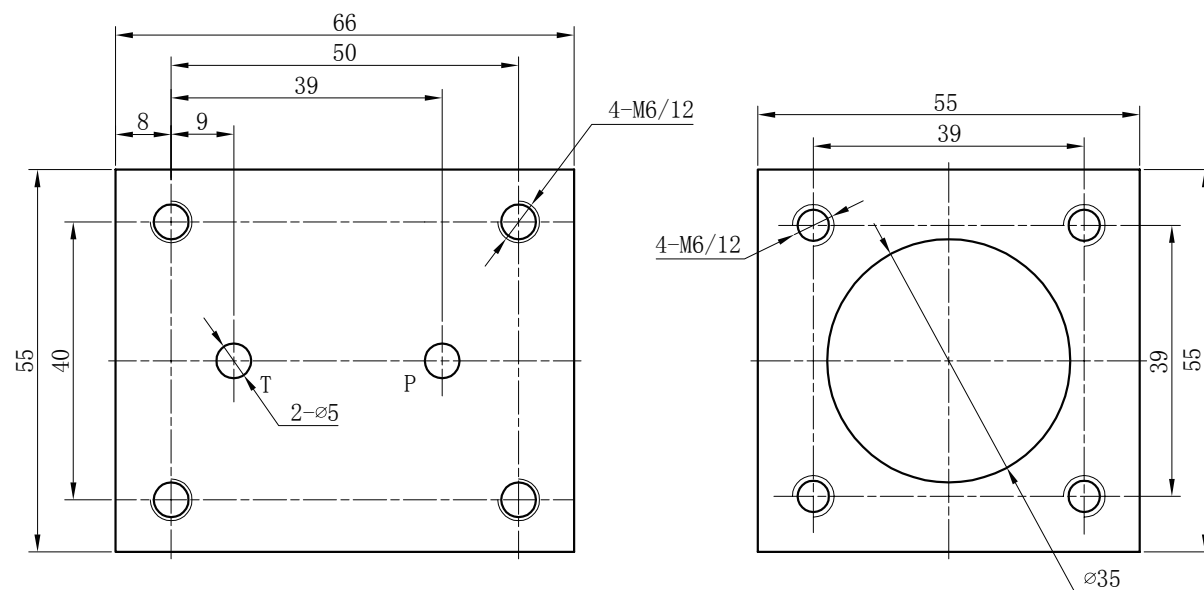
AM1E型压力表隔离阀是手动操作的三通滑阀，它用于偶尔检查主要工作压力。

AM1E series valve is a three-way slide valve operated manually. This series are used for checking a working pressure in hydraulic systems occasionally.

#### ▶ 技术参数 Technical data

工作压力(Mpa) Operating pressure(Mpa)	至30 / To 30
压力表显示范围(Mpa) Pressure Gauge Indicating(Mpa)	6.3; 10; 16; 25; 40
介质温度(°C) Fluid temperature(°C)	-20 ~ 80
重量(千克) Weight(KGS)	1.4
阀体 (材料) 表面处理 Valve body (Material) Surface treatment	铸件 表面磷化处理 casting phosphating surface
油液清洁度/Oil cleanliness	NAS1638 9级和ISO4406 20/18/15级 NAS1638 class 9 and ISO4406 class 20/18/15

#### ▶ 固定底板安装尺寸 Subplate Installation dimensions



# CADIRIRI

[www.cadiriri.com.br](http://www.cadiriri.com.br)

[formularios@cadiriri.com.br](mailto:formularios@cadiriri.com.br)

(11) 2601-2839

(11) 96393-2796