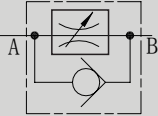


## 2MRB 型流量控制阀

### 2MRB SERIES FLOW CONTROL VALVES

#### 符号 SYMBOL



2MRB 型流量控制阀是带节流口式节流器的精密节流阀，不受压力和温度的影响。

2MRB series flow control valves are restrictive style flow regulators, without affected by pressure and temperature.

#### ▶ 技术参数 Technical data

通径 Size	5							10				16			
最大流量(A-B)(L/min) Max.flow rate(A-B)(L/min)	0.2	0.6	1.2	3	6	10	15	10	16	25	50	60	100	160	
△P值(B-A)(Mpa) △P Value(B-A)(Mpa)	0.05	0.05	0.06	0.09	0.18	0.36	0.67	0.2	0.25	0.35	0.6	0.28	0.43	0.73	
工作压力(Mpa) Operating pressure(Mpa)	21							31.5				31.5			
最小压力损失 Min.pressure loss	0.3-0.5							0.3-0.7				0.5-1.2			
过滤(延长使用寿命)(µm) Filtering to prolong service life(µm)	25 ( Q<5L/min);10(Q<0.5L/min )														
重量(千克) Weight(KGS)	1.38							3.4				7.57			
阀体 (材料) 表面处理 Valve body ( Material ) Surface treatment	铸件 表面磷化处理 casting phosphating surface														
油液清洁度/Oil cleanliness	NAS1638 9级和ISO4406 20/18/15级 NAS1638 class 9 and ISO4406 class 20/18/15														

CADIRIRI

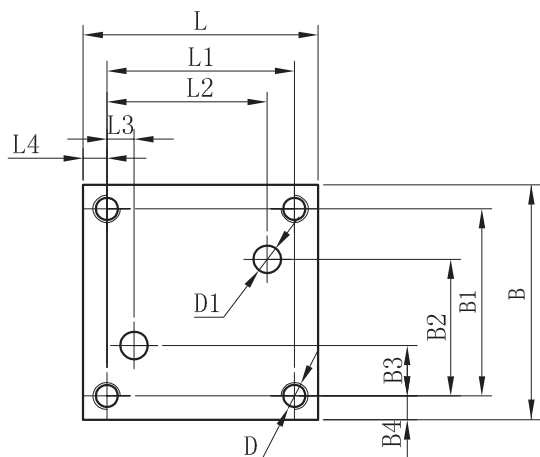
[www.cadiriri.com.br](http://www.cadiriri.com.br)

[formularios@cadiriri.com.br](mailto:formularios@cadiriri.com.br)

(11) 2601-2839

(11) 96393-2796

2MRB 底板连接尺寸 2MRB Subplate Installation dimensions



型号Model	B	B1	B2	B3	B4	L	L1	L2	L3	L4	D	D1
2MRB5	60	48	35	13	6	60	48	41	7	6	4-M5/12	2-Φ6
2MRB10	101.5	82.5	71.6	30.1	9.5	95	76	55.1	9.6	8.5	4-M8/13	2-Φ12
2MRB16	123.5	101.5	90.5	15	11	123.5	101.5	75	20.5	11	4-M10/25	2-Φ20

2MRB	5	-	30	15	*	*
------	---	---	----	----	---	---

型号 Model  
 通径: 5; 10; 16 Size:5;10;16  
 系列号 Series number  
 30=通径5;20=通径10; 50=通径16;  
 30=Size5;20=Size10;50=Size16;  
 流量 (流动方向A-B详见表格) See the form table for flow rate (direction A-B)

附加说明 For further details  
 无=丁晴橡胶 No code=NBR seals  
 V=氟橡胶 V=FPM seals

CADIRIRI

www.cadiriri.com.br

formularios@cadiriri.com.br

(11) 2601-2839

(11) 96393-2796