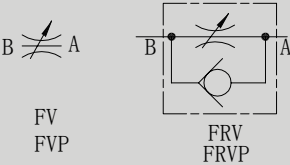


FV/FRV型节流阀/单向节流阀

FV/FRV SERIES THROTTLE VALVES/THROTTLE CHECK VALVES

符号 SYMBOL



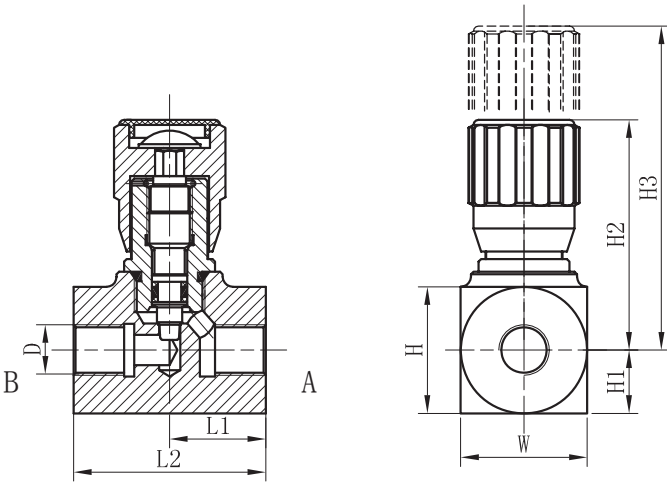
FV/FRV型节流阀/单向节流阀是一种比较简单而又精确地调节执行元件速度的流量控制阀，完全关闭时，它又是截止阀。

FV/FRV; FVP/FRVP series throttle check valves are used to regulate the speed of actuators simply and precisely.

技术参数 Technical data

通径 Size		6	8	10	12	16	20	25	30
工作压力(Mpa) Operating pressure(Mpa)		35	35	35	35	35	35	35	35
流量(L/min) Flow rate(L/min)		16	24	35	45	60	100	150	210
英制 Inch		G1/8"	G1/4"	G3/8"	G1/2"	G3/4"	G1"	G1 1/4"	G1 1/2"
公制 Metric		M10 x 1	M14 x 1.5	M18 x 1.5	M22 x 1.5	M27 x 2	M33 x 2	M42 x 2	M48 x 2
单向阀开启压力 Cracking pressure of check valve		0.05MPa							
管式面板安装 Pipeline type panel connection		M12 x 1.5	M18 x 1.5	M18 x 1.5	M22 x 1.5	M22 x 1.5	M33 x 1.5	M36 x 1.5	M36 x 1.5
重量(千克) Weight(KGS)	FV	0.4	0.3	0.5	0.8	1.1	2.3	4.4	3.8
	FRV	0.4	0.3	0.5	0.8	1.1	2.3	4.4	5.3
	FVP	0.25	0.7	1	1.2	2.5	4.3	8.3	11.2
	FRVP	0.26	0.7	1	1.4	2.7	4.7	8.8	12.2
阀体 (材料) 表面处理 Valve body (Material ) Surface treatment	FV/FRV	钢件 表面镀锌彩 STEEL BODY SURFACE Color zinc plating							
	FVP/FRVP	钢件 表面发黑处理 Steel Body Surface Black Oxide							
油液清洁度/Oil cleanliness		NAS1638 9级和ISO4406 20/18/15级 NAS1638 class 9 and ISO4406 class 20/18/15							

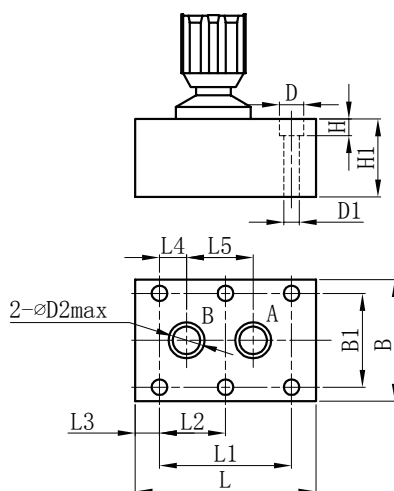
FV/FRV外形尺寸 FV/FRV Unit Dimensions



通径 Size	D		W x H	H1	H2	H3	L1		L2	
							FV	FRV	FV	FRV
6	G1/8"	M10X1	16X16	8	50	55	19	26	38	45
8	G1/4"	M14X1.5	33X28	12.5	69.5	76.5	32.5	40	63.5	63.5
10	G3/8"	M18X1.5	35X37	15	82	89	32.5	41	65	70
12	G1/2"	M22X1.5	35X37	17.5	84	94	44	44	73	73
16	G3/4"	M27X2	45X50	22.5	91	101	44	57	88	88
20	G1"	M33X2	56X56	26	129	146	49	79	98	127
25	G1 1/4"	M42X2	63X63	30	135	152	54	91	108	143
30	G1 1/2"	M48X2	73X73	35	140	157	54	91	108	143

CADIRIRI  
www.cadiriri.com.br  
formularios@cadiriri.com.br  
(11) 2601-2839  
(11) 96393-2796

► FVP/FRVP安装尺寸/FVP/FRVP Installation dimensions



型号Model	D	D1	D2	H	H1	L	L1	L2	L3	L4	L5	B	B1
FVP6/FRVP6	4-Φ11	4-Φ6.6	5	7	20/24	41.5	19	/	6.4	1.6	16	41.5	28.5
FVP8/FRVP8	4-Φ11	4-Φ6.6	8	7	25/26	63	35	/	14.2	4.5	25.5	46	33.5
FVP10/FRVP10	4-Φ11	4-Φ6.6	10	7	28/32	70	33.5	/	18	4	25.5	51	38
FVP12/FRVP12	4-Φ11	4-Φ6.6	35X37	7	28/35	80	38	/	21	4	30	57.5	44.5
FVP16/FRVP16	6-Φ14	6-Φ9	45X50	7	54	104	76	38	14	11.4	54	70	54
FVP20/FRVP20	6-Φ14	6-Φ9	56X56	11	58.5	127	95	47.5	16	19	57	76.5	60
FVP25/FRVP25	6-Φ17	6-Φ11	63X63	13	68.5	165	120	60	15	20.6	79.5	100	76
FVP30/FRVP30	6-Φ19	6-Φ13	73X73	18	79	186	143	71.5	15	23.8	95	115	92

FV	10	*	1	10	*	*	*
----	----	---	---	----	---	---	---

FV=节流截止阀  
 FRV=单向节流截止阀  
 FVP=板式节流截止阀  
 FRVP=板式单向节流截止阀  
 FV=Throttle shut-off valve  
 FRV=Throttle check shut-off valve  
 FVP=Subplate type throttle shut-off valve  
 FRVP= Subplate type throttle check shut-off valve  
 通径:6,10,12,16,20,25,30,40  
 Size:6,10,12,16,20,25,30,40  
 无 = 管式安装; S = 面板安装  
 No code=Threaded connection  
 S=Subplate mounting

附加说明  
 For further details  
 无 = 英制;2 = 公制  
 No code=Inch;  
 2=Metric  
 无=丁晴橡胶  
 V=氟橡胶  
 No code=NBR seals  
 V=FPM seals  
 系列号  
 Series number  
 1=钢  
 1=Steel