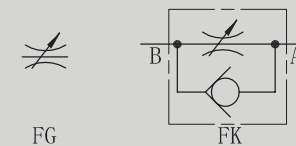


FG 型节流阀/FK单向节流阀

FG THROTTLE VALVES/FK  
THROTTLE CHECK VALVES

符号 SYMBOL



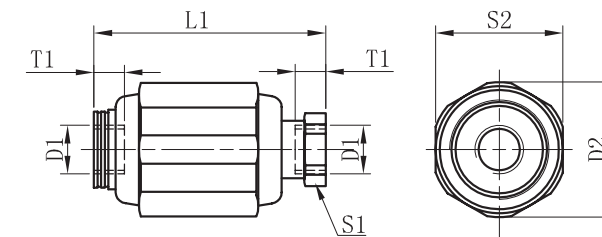
FG/FK型阀是直接安装在管路上的节流阀/单向节流阀。FG型节流阀只要旋转调节套就可以改变节流口通流面积从而实现流量调节，为双向节流。FK型节流阀带有单向阀，可实现单向节流。

FG/FK series throttle/throttle check valves mounted on the oil pipe lines di-rectly.FG throttle valve is used to regulate flow by turning adjustment sleeve.FK throttle check valve is used to control flow in one direction and allow free flow in the opposite.

技术参数 Technical data

通径 Size	6	8	10	15	20	25	30
工作压力(Mpa) Operating pressure(Mpa)	31.5	31.5	31.5	31.5	31.5	31.5	31.5
流量(L/min) Flow rate(L/min)	15	30	50	125	200	300	400
英制 Inch	G1/4"	G3/8"	G1/2"	G3/4"	G1"	G1 1/4"	G1 1/2"
公制 Metric	M14 x 1.5	M18 x 1.5	M22 x 1.5	M27 x 2	M33 x 2	M42 x 2	M48 x 2
单向阀开启压力 Cracking pressure of check valve	0.05MPa						
重量(千克) Weight(KGS)							
	FK						
	FG	0.3	0.4	0.7	1.3	2.3	3.8
阀体 (材料) 表面处理 Valve body (Material) Surface treatment	钢件 表面发黑处理 Steel Body Surface Black Oxide						
油液清洁度/Oil cleanliness	NAS1638 9级和ISO4406 20/18/15级 NAS1638 class 9 and ISO4406 class 20/18/15						

FG/FK 管式图 FG/FK Drawing



通径 Size	D1		D2	L1	S1	S2	T1
	公制 Metric	英制 Inch					
6	M14X1.5	G1/4"	34	65	22	32	12
8	M18X1.5	G3/8"	38	65	24	36	12
10	M22X1.5	G1/2"	48	80	30	46	14
15	M27X2	G3/4"	58	100	41	55	16
20	M33X2	G1"	72	110	46	70	18
25	M42X2	G1 1/4"	87	130	55	85	20
30	M48X2	G1 1/2"	93	150	60	90	22

FG=节流阀;  
FK = 单向节流阀  
FG=Throttle valve;  
FK=Throttle check valve

通径:6;8;10;15;20;25;30  
Size:6;8;10;15;20;25;30

G=管式 G=Threaded connection  
P=板式 P=Subplate mounting

系列号  
Series number

附加说明  
For further details

无=丁晴橡胶  
V=氟橡胶  
No code=NBR seals  
V=FPM seals

无 = 英制; 2 = 公制  
No code = Inch; 2 = Metric

CADIRIRI

www.cadiriri.com.br

formularios@cadiriri.com.br

(11) 2601-2839

(11) 96393-2796