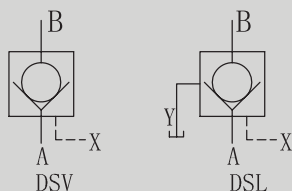


DSV/DSL型液控单向阀

DSV/DSL PILOT OPERATED CHECK VALVES

符号 SYMBOL



DSV/DSL型液控单向阀只允许油液从正向通过，反向则截止，可用作保压。当接通控制口X时，压力油可反向流动。
DSV型为泄漏油内部回油；DSL型为泄漏油外部回油。

DSV/DSL pilot operated check valves allow free flow in one direction and block flow in the counter direction to maintain pressure. The oil is allowed to flow in the counter direction when the X port is connected.
DSV is designed for internally drained. DSL is designed for externally drained.

► 技术参数 Technical data

通径(板式) Size	DSV10	DSL10	DSV20	DSL20	DSV30	DSL30
X口控制容积(cm ³) Port X pilot volume(cm ³)	2.2		8.7		17.5	
Y口容积(cm ³) Port Y volume(cm ³)	—	1.9	—	7.7	—	15.8
流动方向 Direction of flow	从A→B正向流通 从B→A阀开启时反向流通 Free from A to B; From B to A by opening					
工作压力(Mpa) Operating pressure(Mpa)	31.5					
控制压力(MPa) Pilot control pressure range(MPa)	0.5–31.5					
最大流量(L/min) Max. flow rate(L/min)	80		150		300	
重量(千克) Weight(KGS)	2.5	2.3	4.3	4.6	8.5	9.2
阀体 (材料) 表面处理 Valve body (Material) Surface treatment	钢件 表面发黑处理 Steel Body Surface Black Oxide					
油液清洁度/Oil cleanliness	NAS1638 9级和ISO4406 20/18/15级 NAS1638 class 9 and ISO4406 class 20/18/15					

CADIRIRI

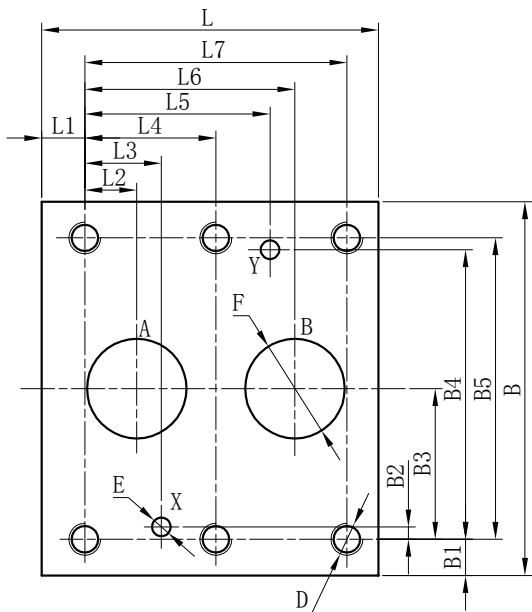
www.cadiriri.com.br

formularios@cadiriri.com.br

(11) 2601-2839

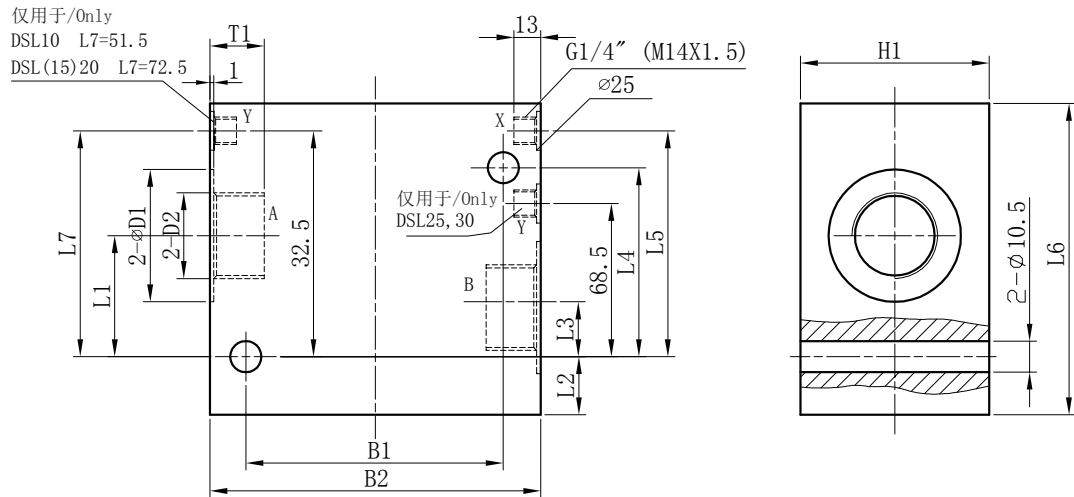
(11) 96393-2796

底板安装尺寸 Subplate mounting dimensions



通径 size	L	L1	L2	L3	L4	L5	L6	L7	B	B1	B2	B3	B4	B5	D	E	F
10	80	18.5	7.2	21.5	—	21.5	35.8	42.9	85	9.15	7.9	33.35	58.8	66.7	4-M10/24	2-Φ6	2-Φ13
20	95	17.5	11.1	20.6	—	39.7	49.2	60.3	102	11.3	6.4	39.7	73	79.4	4-M10/24	2-Φ6	2-Φ25
30	115	15.5	16.7	24.5	42.1	59.5	67.5	84.2	120	11.6	3.8	48.4	92.8	96.8	6-M10/24	2-Φ6	2-Φ32

管式连接尺寸 Threaded connection dimensions



型号Model	通径 size	B1	B2	D1	D2	T1	H1	L1	L2	L3	L4	L5	L6
DSV	10	66.5	85	34	G 1/2" M22X1.5	14	42	27.5	18.5	10.5	33.5	49	80
	15	79.5	100	42	G 3/4" M27X2	16	57	36.7	17.3	13.3	50.5	67.5	95
	20	79.5	100	47	G1" M33X2	18	57	36.7	17.3	13.3	50.5	67.5	95
	25	97	120	56	G 1 1/4" M42X2	20	75	54.5	15.5	20.5	73.5	89.5	115
	30	97	120	61	G1 1/2" M48X2	22	75	54.5	15.5	20.5	73.5	89.5	115
DSL	10	66.5	85	34	G 1/2" M22X1.5	14	42	22.5	18.5	10.5	33.5	49	80
	15	79.5	100	42	G 3/4" M27X2	16	57	30.5	17.5	13	50.5	72.5	100
	20	79.5	100	47	G1" M33X2	18	57	30.5	17.5	13	50.5	72.5	100
	25	97	120	56	G 1 1/4" M42X2	20	75	54.5	15.5	20.5	84	99.5	125
	30	97	120	61	G1 1/2" M48X2	22	75	54.5	15.5	20.5	84	99.5	125

